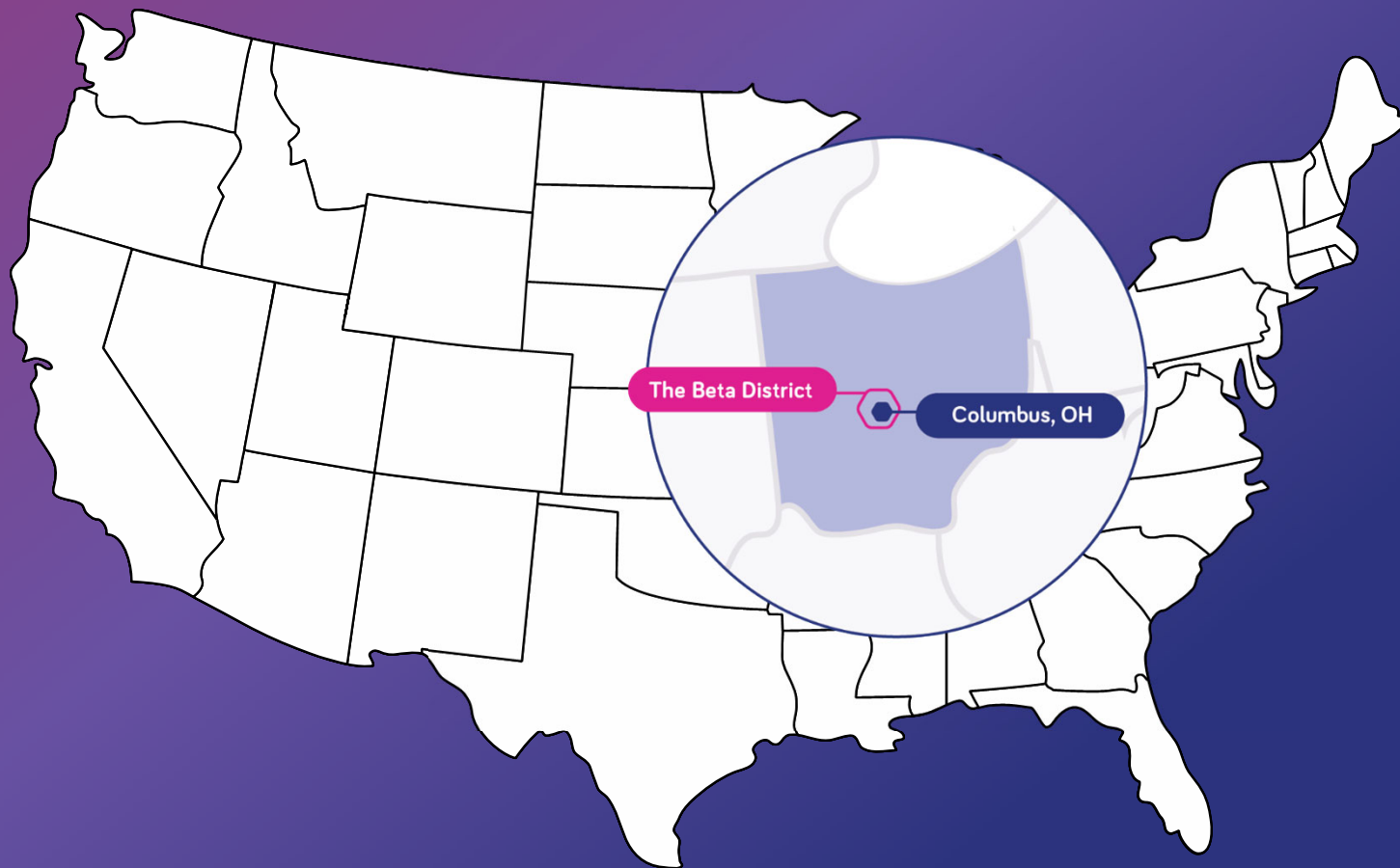




Launching The Beta District Brand

DANA McDANIEL SUE BURNESS MARIE KEISTER JAKE KAUFMAN



LEVERAGE THE 33 SMART MOBILITY CORRIDOR



**CONNECTED
INFRASTRUCTURE**



**UNIQUE
PARTNERSHIPS**



**ECONOMIC
DEVELOPMENT**



**EDUCATION
& SAFETY**

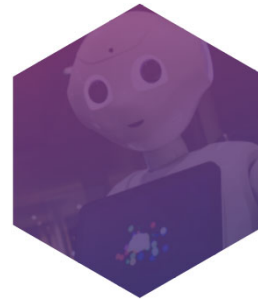
FINDING OUR BRAND



PARTNER
INTERVIEWS



COMPETITIVE
LANDSCAPE



TARGET MARKET
INTERVIEWS



FOCUS GROUP
VALIDATION

We aren't just
building a smart
road, we're
creating **an**
ecosystem.



| A Platform For
Innovation Of *All* Kinds

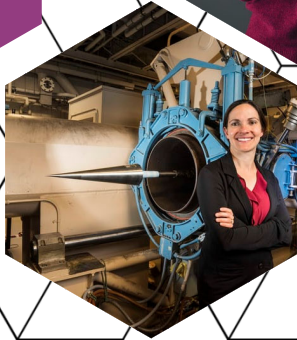
We are an expansive **region** where private sector, government, and academia **work together** in an **open playground** to safely **test and deploy** technology in **real-world scenarios**.



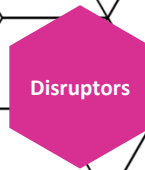
Makers



Pioneers



Innovators



Disruptors

WHO IS THE
“CUSTOMER”?

THE BRAND MUST BE

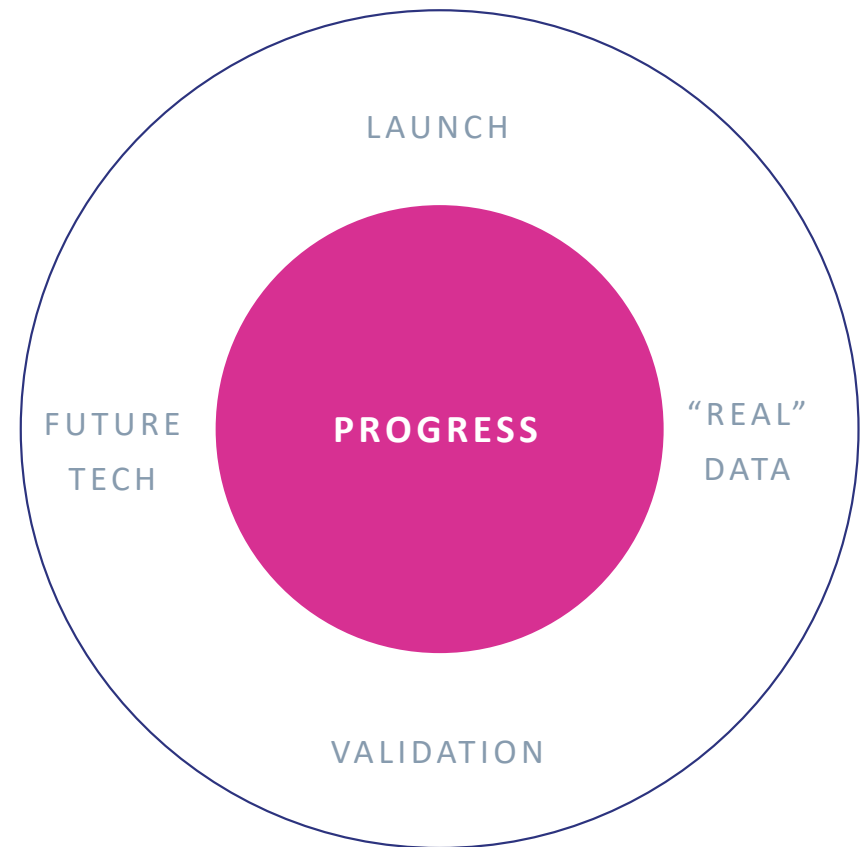
DIFFERENT

COMPELLING

AUTHENTIC

OWNABLE

ZEROING IN ON OUR ESSENCE



THE BETA DISTRICT



DIFFERENT



COMPELLING



AUTHENTIC



OWNABLE

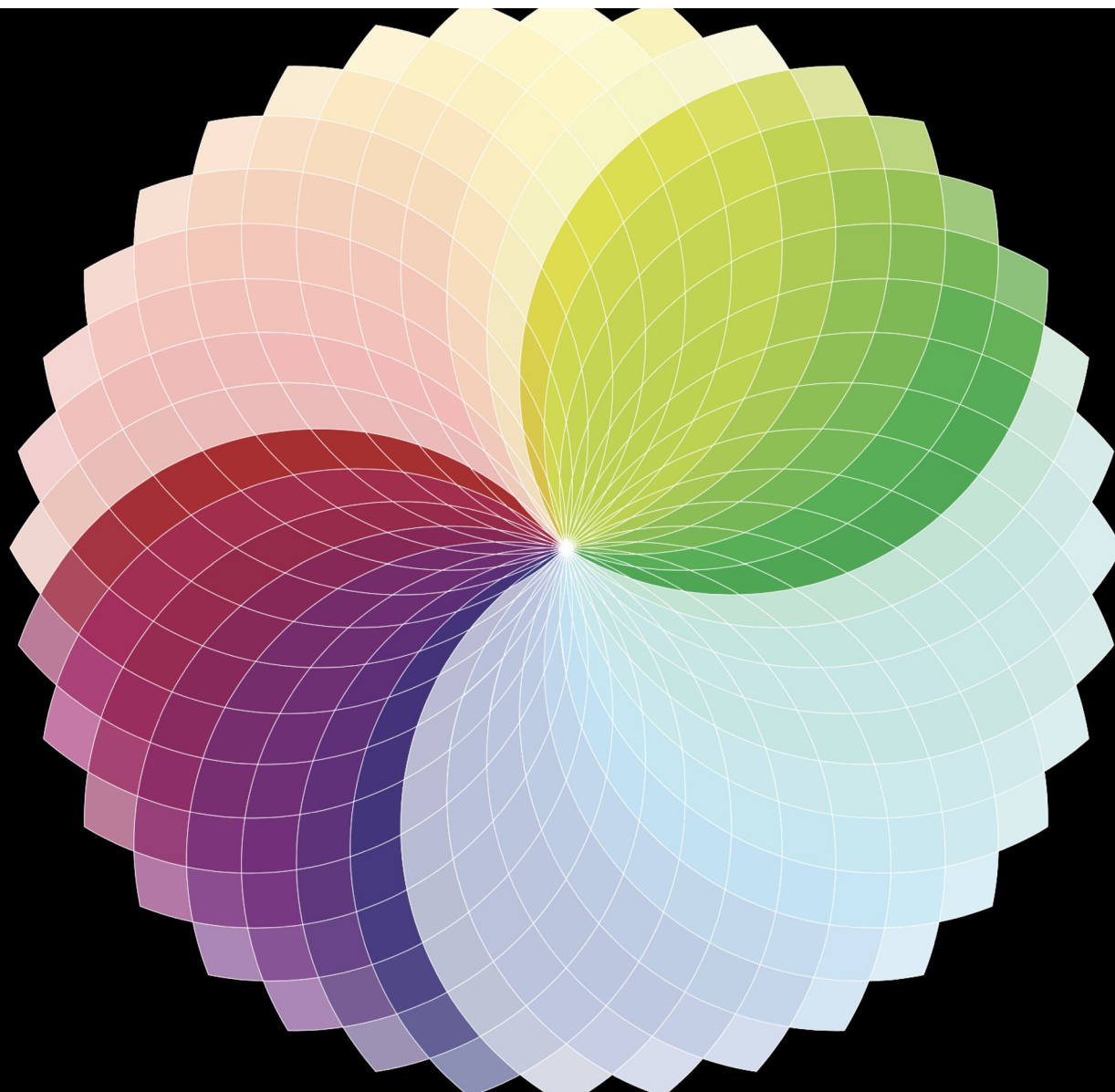
COMPETITOR COLORS



INNOVATE.VEGAS



Looking at these competitors,
it leaves us open corridors for
the colors that speak to the
personality traits we want
to convey



Creative
Insightful
Imaginative
Responsible



Passionate
Driven
Strong



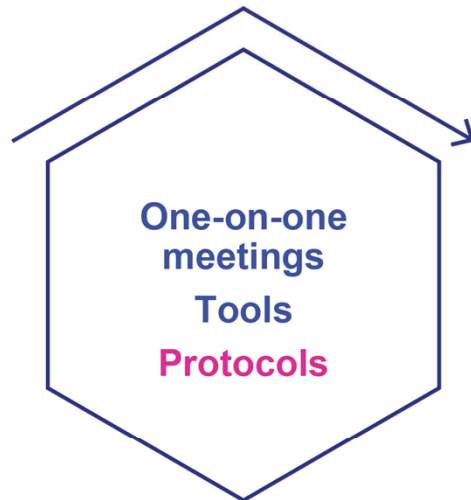
Safe
Secure
Balanced





Where the future is tested in the Columbus region

STEP 1: PARTNER LAUNCH



STEP 2: EXTERNAL LAUNCH



STEP 3: “PLUG IN”



LEVERAGE THE 33 SMART MOBILITY CORRIDOR



**CONNECTED
INFRASTRUCTURE**



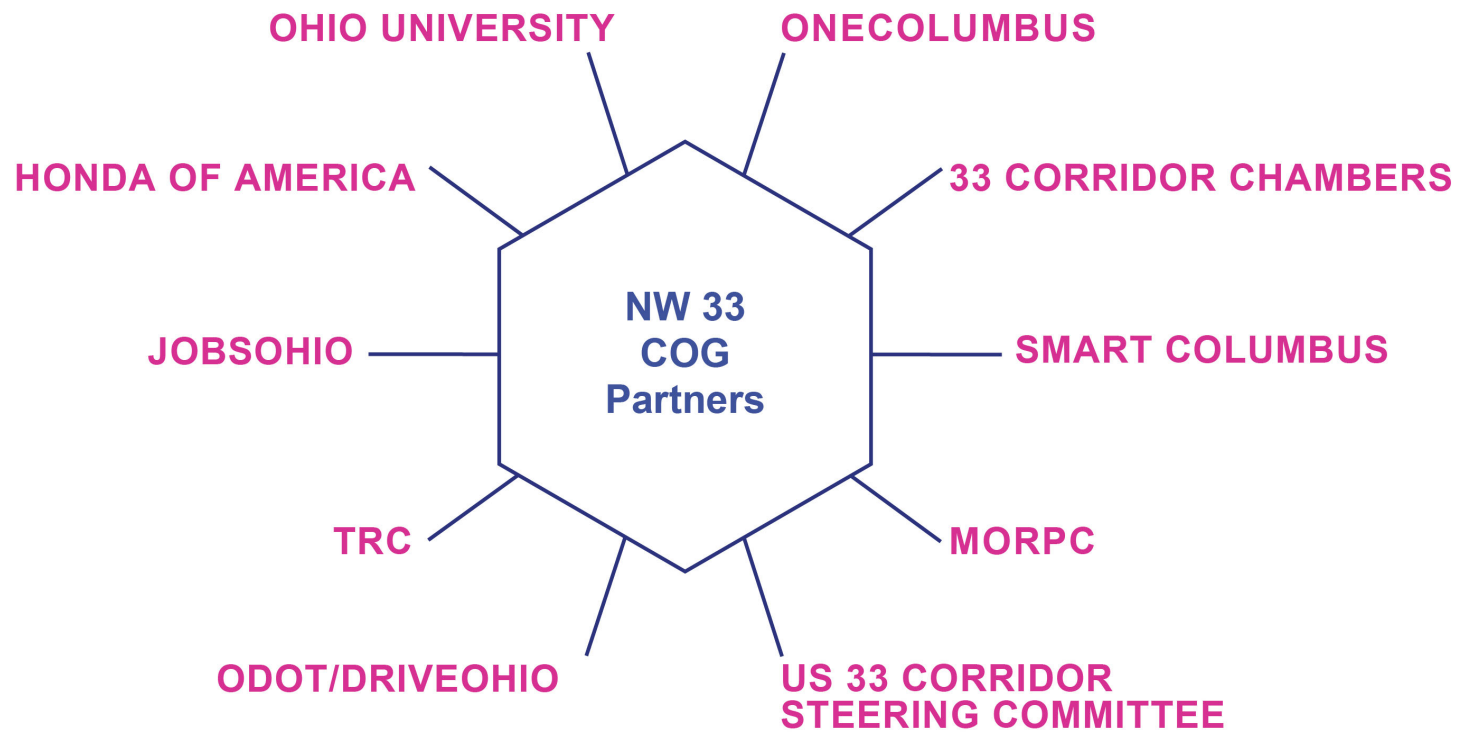
**UNIQUE
PARTNERSHIPS**



**ECONOMIC
DEVELOPMENT**



**EDUCATION
& SAFETY**



TOOLS

**BRAND ASSETS, “HOW TO” MESSAGING,
COORDINATION PROTOCOLS**

OLD WAY

Honda Demonstrates New “Smart Intersection” Technology

Honda held a demonstration on Oct. 4 of its “Smart Intersection” technology for vehicle-to-everything (V2X) communication designed to reduce traffic collisions at roadway intersections, one of the first such deployments of V2X technology in a real-world setting.

Developed in partnership with the City of Marysville as part of the 33 Smart Mobility Corridor project, the pilot project seeks to address the limitations of on-board vehicle sensors in addressing traffic collisions at roadway intersections. Intersection collisions account for roughly 40 percent of all collisions and 20 percent of the nearly 35,000 traffic-related deaths that occur in the U.S. each year.

NEW WAY

Honda Demonstrates New “Smart Intersection” Technology **in The Beta District**

Honda held a demonstration on Oct. 4 in **The Beta District** of its “Smart Intersection” technology for vehicle-to-everything (V2X) communication designed to reduce traffic collisions at roadway intersections, one of the first such deployments of V2X technology in a real-world setting.

Developed in partnership **with The Beta District** and the City of Marysville as part of the 33 Smart Mobility **Real-World Highway Lab**, the pilot project seeks to address the limitations of on-board vehicle sensors in addressing traffic collisions at roadway intersections. Intersection collisions account for roughly 40 percent of all collisions and 20 percent of the nearly 35,000 traffic-related deaths that occur in the U.S. each year.

PANEL DISCUSSION